



ESK-3000

A Scan, B Scan and
Pachymeter

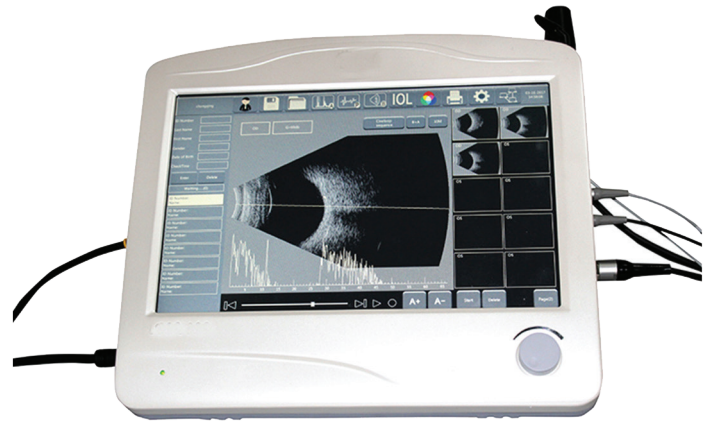


OPHTHALMOLOGY / ENT

Features

B-Scan

Frequency: 10MHz
 Scan Mode: Mechanical Setor Scanning
 Gray Levels: 256
 Adjustable Gain: 20-105db
 Depth: ≥ 60 mm
 Angle of Exploration: 53°
 Time Gain Control (TGC): 0-30db
 Image Freezing: 20 pcs
 Resolution: Axial ≤ 0.2 mm, Lateral ≤ 0.4
 Display Mode: B, B+A
 Report Print: Video Print
 Playback: 150 frame and Playback Screenshot



A-Scan

Frequency: 10MHz
 Measurement Range: 0 - 60mm
 Accuracy: ≤ 0.04 mm
 Default Eye Mode: 6 Different Modes and 3 Customized Modes
 IOL Calculation: 6 different methods and comparing calculation
 Calculation Method: Standard Deviation

Pachymeter

Frequency: 20MHz
 Accuracy: ≤ 0.01 mm
 Depth: 0.3 - 1.5mm
 Output Mode: Video Print

Other Parameter

Computer: Built-in System, 12.1 inch Touch Screen Display
 Picture Processing: Brightness, Contrast, Image Playback, Pseudo-color, Image Measurement, Image Remark
 Printer: Sony Duplicator, Computer with Graphic Workstation